

Anti-PPM1B Polyclonal Antibody

Cat: K108144P

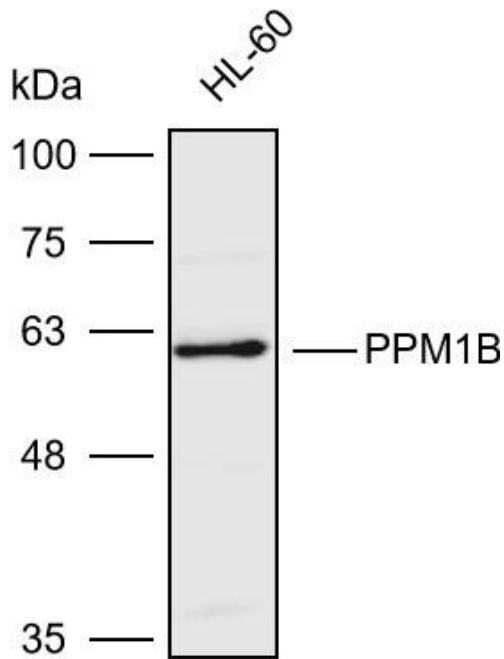
Summary:

【Product name】 : Anti-PPM1B antibody	【Source】 : Rabbit
【Isotype】 : IgG	【Species reactivity】 : Human Mouse Rat
【Swiss Prot】 : O75688	【Gene ID】 : 5495
【Calculated】 : MW:21/36/43/53kDa	【Observed】 : MW:60kDa
【Purification】 : Affinity purification	
【Tested applications】 : WB IHC	
【Recommended dilution】 : WB 1:1000-3000. IHC1:50-200.	
【WB Positive sample】 : HL-60	
【IHC Positive sample】 : Human colorectal cancer	
【Subcellular location】 : Cytoplasm	
【Immunogen】 : Recombinant protein of human PPM1B	
【Storage】 : Shipped at 4°C. Upon delivery aliquot and store at -20°C	

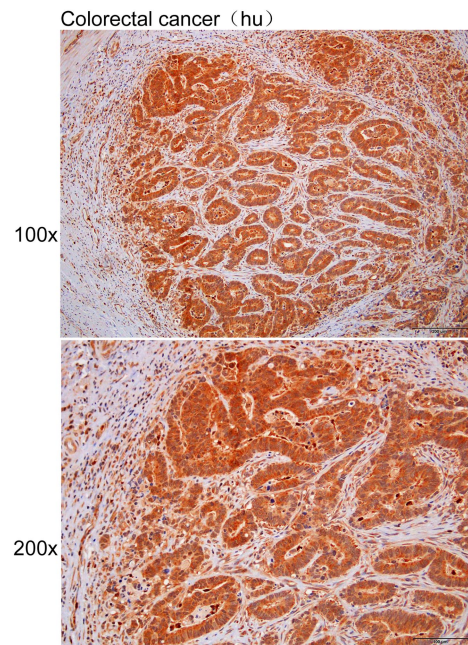
Background:

The protein encoded by this gene is a member of the PP2C family of Ser/Thr protein phosphatases. PP2C family members are known to be negative regulators of cell stress response pathways. This phosphatase has been shown to dephosphorylate cyclin-dependent kinases (CDKs), and thus may be involved in cell cycle control. Overexpression of this phosphatase is reported to cause cell-growth arrest or cell death. Alternative splicing results in multiple transcript variants encoding different isoforms. Additional transcript variants have been described, but currently do not represent full-length sequences.

Verified picture



Western blot analysis with PPM1B antibody diluted at 1:2000; Lane: HL-60



Immunohistochemistry of paraffin-embedded Human colorectal cancer with PPM1B antibody diluted at 1:100