

Anti-TTC26 Polyclonal Antibody

Cat: K108148P

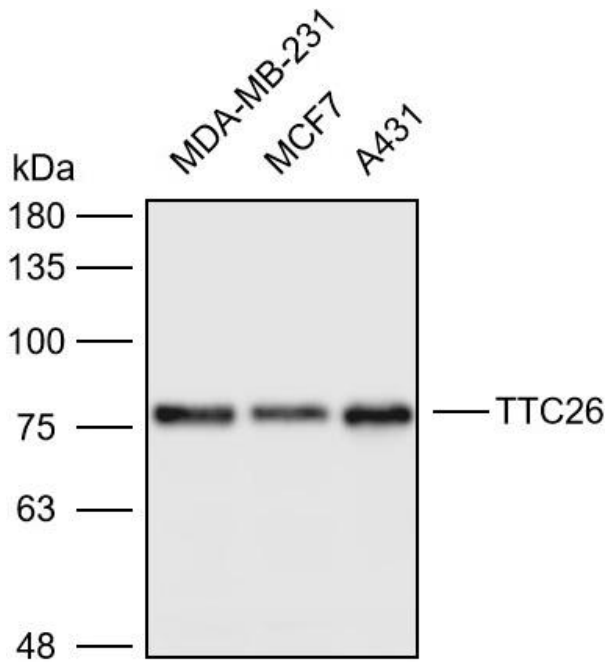
Summary:

【Product name】 : Anti-TTC26 antibody	【Source】 : Rabbit
【Isotype】 : IgG	【Species reactivity】 : Human Mouse Rat
【Swiss Prot】 : A0AVF1	【Gene ID】 : 79989
【Calculated】 : MW:56/60/64kDa	【Observed】 : MW:77kDa
【Purification】 : Affinity purification	
【Tested applications】 : WB	
【Recommended dilution】 : WB 1:1000-3000.	
【WB Positive sample】 : MDA-MB-231,MCF7,A431	
【Subcellular location】 : Cytoplasm	
【Immunogen】 : Recombinant protein of human TTC26	
【Storage】 : Shipped at 4°C. Upon delivery aliquot and store at -20°C	

Background:

Component of the intraflagellar transport (IFT) complex B required for transport of proteins in the motile cilium. Required for transport of specific ciliary cargo proteins related to motility, while it is neither required for IFT complex B assembly or motion nor for cilium assembly. Required for efficient coupling between the accumulation of GLI2 and GLI3 at the ciliary tips and their dissociation from the negative regulator SUFU. Plays a key role in maintaining the integrity of the IFT complex B and the proper ciliary localization of the IFT complex B components. Not required for IFT complex A ciliary localization or function. Essential for maintaining proper microtubule organization within the ciliary axoneme.

Verified picture



Western blot analysis with TTC26 antibody diluted at 1:2000; Lane: MDA-MB-231, MCF7, A431