

Anti-PDCL2 Polyclonal Antibody

Cat: K108155P

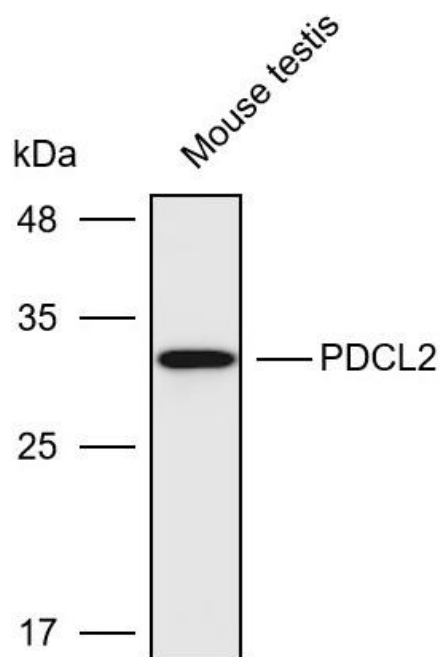
Summary:

【Product name】 : Anti-PDCL2 antibody	【Source】 : Rabbit
【Isotype】 : IgG	【Species reactivity】 : Human Mouse Rat
【Swiss Prot】 : Q8N4E4	【Gene ID】 : 132954
【Calculated】 : MW:28kDa	【Observed】 : MW:32kDa
【Purification】 : Octanoic acid-ammonium sulfate precipitation	
【Tested applications】 : WB IHC	
【Recommended dilution】 : WB 1:1000-3000. IHC1:50-200.	
【WB Positive sample】 : Mouse testis	
【IHC Positive sample】 : Mouse kidney	
【Subcellular location】 : Cytoplasm	
【Immunogen】 : Recombinant protein of human PDCL2	
【Storage】 : Shipped at 4°C. Upon delivery aliquot and store at -20°C	

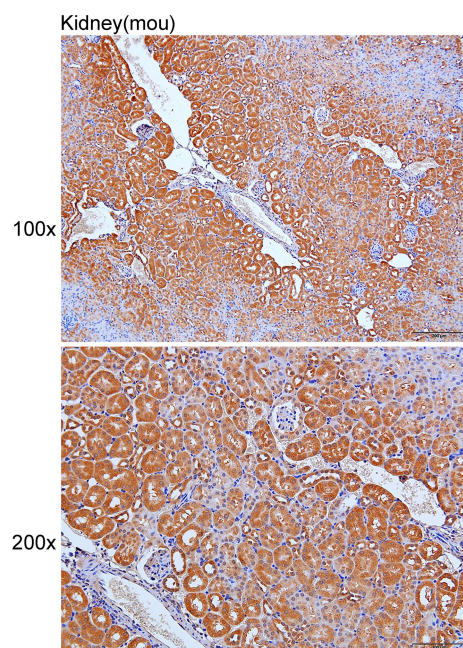
Background:

This gene encodes a member of the phosducin-like protein family and is a putative modulator of heterotrimeric G proteins. The protein shares extensive amino acid sequence homology with phosducin. Members of the phosducin-like protein family have been shown to bind to the beta-gamma subunits of G proteins.

Verified picture



Western blot analysis with PDCL2 antibody diluted at 1:2000; Lane: Mouse testis



Immunohistochemistry of paraffin-embedded Mouse kidney with PDCL2 antibody diluted at 1:100