

## Anti-HLA-DRB3 Polyclonal Antibody

Cat: K108156P

### Summary:

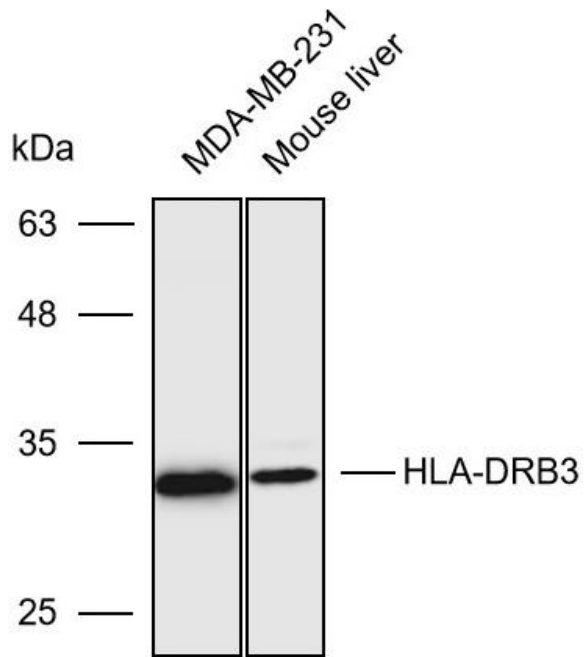
---

<b>【Product name】</b> : Anti-HLA-DRB3 antibody	<b>【Source】</b> : Rabbit
<b>【Isotype】</b> : IgG	<b>【Species reactivity】</b> : Human Mouse Rat
<b>【Swiss Prot】</b> : P79483	<b>【Gene ID】</b> : 3125
<b>【Calculated】</b> : MW:30kDa	<b>【Observed】</b> : MW:32kDa
<b>【Purification】</b> : Affinity purification	
<b>【Tested applications】</b> : WB IHC	
<b>【Recommended dilution】</b> : WB 1:1000-3000. IHC1:100-300.	
<b>【WB Positive sample】</b> : MDA-MB-231, Mouse testis	
<b>【IHC Positive sample】</b> : Human lung cancer	
<b>【Subcellular location】</b> : Cell membrane Cytoplasm	
<b>【Immunogen】</b> : Recombinant protein of human HLA-DRB3	
<b>【Storage】</b> : Shipped at 4°C. Upon delivery aliquot and store at -20°C	

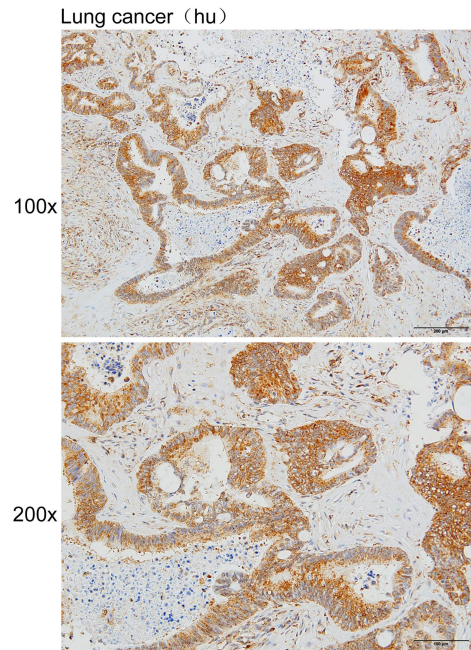
### Background:

HLA-DRB3 belongs to the HLA class II beta chain paralogues. This class II molecule is a heterodimer consisting of an alpha (DRA) and a beta (DRB) chain, both anchored in the membrane. It plays a central role in the immune system by presenting peptides derived from extracellular proteins. Class II molecules are expressed in antigen presenting cells (APC: B lymphocytes, dendritic cells, macrophages). The beta chain is approximately 26-28 kDa and its gene contains 6 exons. Exon one encodes the leader peptide, exons 2 and 3 encode the two extracellular domains, exon 4 encodes the transmembrane domain and exon 5 encodes the cytoplasmic tail. Within the DR molecule the beta chain contains all the polymorphisms specifying the peptide binding specificities. Typing for these polymorphisms is routinely done for bone marrow and kidney transplantation. DRB1 is expressed at a level five times higher than its paralogues DRB3, DRB4 and DRB5. The presence of DRB3 is linked with allelic variants of DRB1, otherwise it is omitted. There are 4 related pseudogenes: DRB2, DRB6, DRB7, DRB8 and DRB9.

## Verified picture



Western blot analysis with HLA-DRB3 antibody diluted at 1:2000; Lane: MDA-MB-231, Mouse testis



Immunohistochemistry of paraffin-embedded Human lung cancer with HLA-DRB3 antibody diluted at 1:200