

Anti-UBE2W Polyclonal Antibody

Cat: K108157P

Summary:

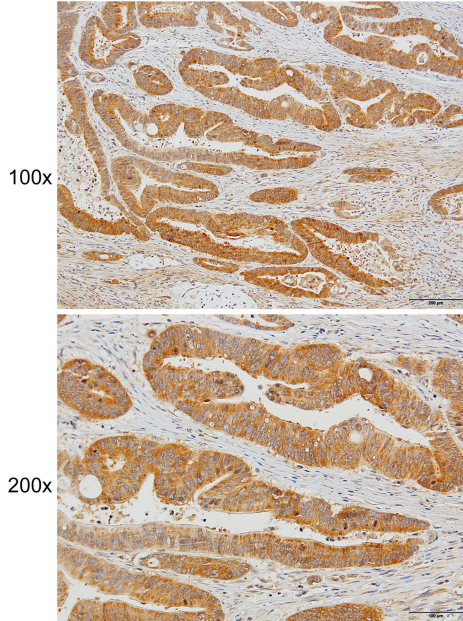
- 【Product name】** : Anti-UBE2W antibody **【Source】** : Rabbit
- 【Isotype】** : IgG **【Species reactivity】** : Human Mouse Rat
- 【Swiss Prot】** : Q96B02 **【Gene ID】** : 55284
- 【Calculated】** : MW:17/18/21kDa
- 【Purification】** : Affinity purification
- 【Tested applications】** : IHC
- 【Recommended dilution】** : IHC 1:50-200.
- 【IHC Positive sample】** : Human colorectal cancer
- 【Subcellular location】** : Cytoplasm
- 【Immunogen】** : Recombinant protein of human UBE2W
- 【Storage】** : Shipped at 4°C. Upon delivery aliquot and store at -20°C

Background:

This gene encodes a nuclear-localized ubiquitin-conjugating enzyme (E2) that, along with ubiquitin-activating (E1) and ligating (E3) enzymes, coordinates the addition of a ubiquitin moiety to existing proteins. The encoded protein promotes the ubiquitination of Fanconi anemia complementation group proteins and may be important in the repair of DNA damage. There is a pseudogene for this gene on chromosome 1. Alternative splicing results in multiple transcript variants.

Verified picture

Colorectal cancer (hu)



Immunohistochemistry of paraffin-embedded
Human colorectal cancer with UBE2W
antibody diluted at 1:100