

## Anti-RGS3 Polyclonal Antibody

Cat: K108161P

### Summary:

---

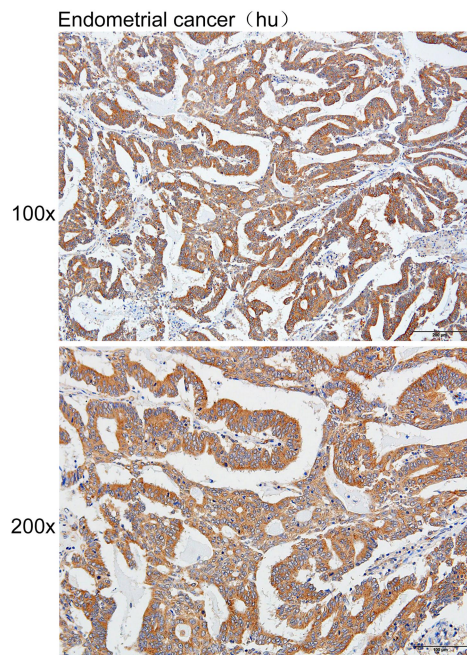
<b>【Product name】</b> : Anti-RGS3 antibody	<b>【Source】</b> : Rabbit
<b>【Isotype】</b> : IgG	<b>【Species reactivity】</b> : Human Mouse Rat
<b>【Swiss Prot】</b> : P49796	<b>【Gene ID】</b> : 5998
<b>【Calculated】</b> : MW:24/36/57/67/101/121/132kDa	
<b>【Purification】</b> : Affinity purification	
<b>【Tested applications】</b> : IHC	
<b>【Recommended dilution】</b> : IHC 1:25-100.	
<b>【IHC Positive sample】</b> : Human endometrial cancer	
<b>【Subcellular location】</b> : Cytoplasm Nucleus	
<b>【Immunogen】</b> : Recombinant protein of human RGS3	
<b>【Storage】</b> : Shipped at 4°C. Upon delivery aliquot and store at -20°C	

### Background:

---

This gene encodes a member of the regulator of G-protein signaling (RGS) family. This protein is a GTPase-activating protein that inhibits G-protein-mediated signal transduction. Alternative splicing and the use of alternative promoters results in multiple transcript variants encoding different isoforms. Long isoforms are largely cytosolic and plasma membrane-associated with a function in Wnt signaling and in the epithelial mesenchymal transition, while shorter N-terminally-truncated isoforms can be nuclear.

## Verified picture



Immunohistochemistry of paraffin-embedded  
Human endometrial cancer with RGS3  
antibody diluted at 1:80