

## Anti-ELK3 Polyclonal Antibody

Cat: K108566P

### Summary:

---

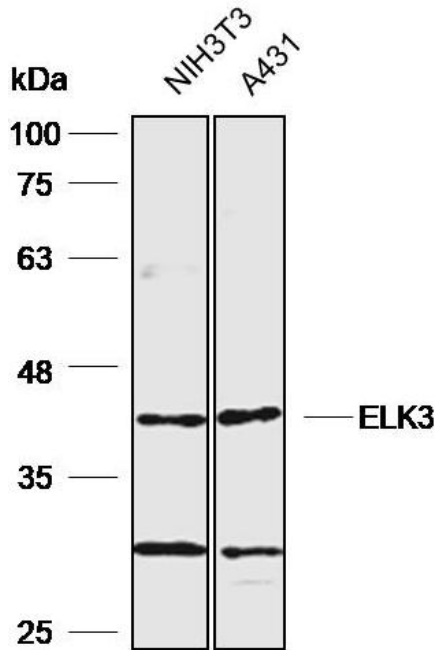
<b>【Product name】</b> : Anti-ELK3 antibody	<b>【Source】</b> : Rabbit
<b>【Isotype】</b> : IgG	<b>【Species reactivity】</b> : Human
<b>【Swiss Prot】</b> : P41970	<b>【Gene ID】</b> : 2004
<b>【Calculated】</b> : MW:44kDa	<b>【Observed】</b> : MW:44kDa
<b>【Purification】</b> : Affinity purification	
<b>【Tested applications】</b> : WB IHC	
<b>【Recommended dilution】</b> : WB 1:1000-3000. IHC 1:50-200.	
<b>【WB Positive sample】</b> : NIH3T3,A431	
<b>【IHC Positive sample】</b> : Human cervical cancer	
<b>【Subcellular location】</b> : Nucleus Cytoplasm	
<b>【Immunogen】</b> : Recombinant protein of human ELK3	
<b>【Storage】</b> : Shipped at 4°C. Upon delivery aliquot and store at -20°C	

### Background:

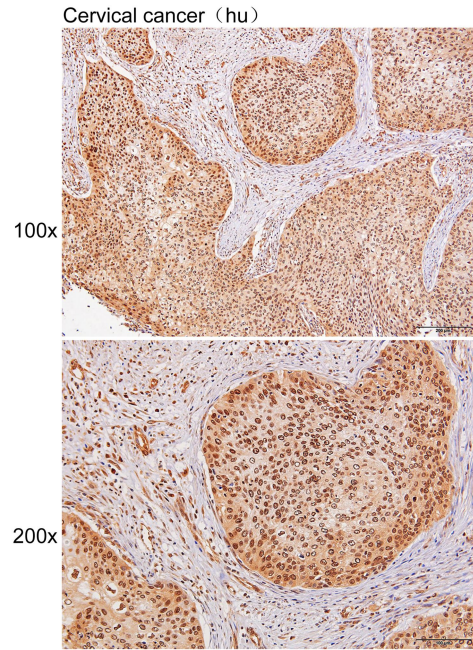
---

May be a negative regulator of transcription, but can activate transcription when coexpressed with Ras, Src or Mos. Forms a ternary complex with the serum response factor and the ETS and SRF motifs of the Fos serum response element.

## Verified picture



Western blot analysis with ELK3 antibody diluted at 1:2000; Lane: NIH3T3, A431



Immunohistochemistry of paraffin-embedded Human cervical cancer with ELK3 antibody diluted at 1:100