

Anti-UBE2H Polyclonal Antibody

Cat: K108813P

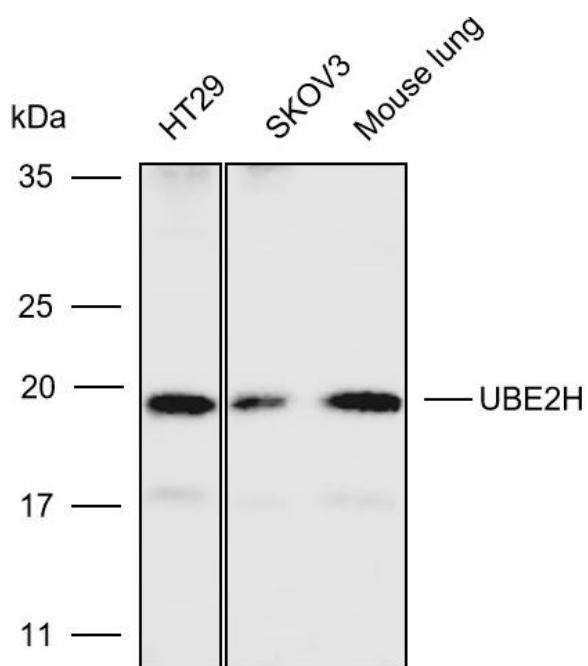
Summary:

【Product name】 : Anti-UBE2H antibody	【Source】 : Rabbit
【Isotype】 : IgG	【Species reactivity】 : Human Mouse Rat
【Swiss Prot】 : P62256	【Gene ID】 : 7328
【Calculated】 : MW:17/21kDa	【Observed】 : MW:19kDa
【Purification】 : Affinity purification	
【Tested applications】 : WB	
【Recommended dilution】 : WB 1:1000-3000.	
【WB Positive sample】 : HT29,SKOV3,Mouse lung	
【Subcellular location】 : Cytoplasm	
【Immunogen】 : Recombinant protein of human UBE2H	
【Storage】 : Shipped at 4°C. Upon delivery aliquot and store at -20°C	

Background:

The modification of proteins with ubiquitin is an important cellular mechanism for targeting abnormal or short-lived proteins for degradation. Ubiquitination involves at least three classes of enzymes: ubiquitin-activating enzymes, or E1s, ubiquitin-conjugating enzymes, or E2s, and ubiquitin-protein ligases, or E3s. This gene encodes a member of the E2 ubiquitin-conjugating enzyme family. The encoded protein sequence is 100% identical to the mouse homolog and 98% identical to the frog and zebrafish homologs. Three alternatively spliced transcript variants have been found for this gene and they encode distinct isoforms.

Verified picture



Western blot analysis with UBE2H antibody diluted at 1:2000; Lane: HT29, SKOV3, Mouse lung