

## Anti-PHYKPL Polyclonal Antibody

Cat: K108821P

### Summary:

---

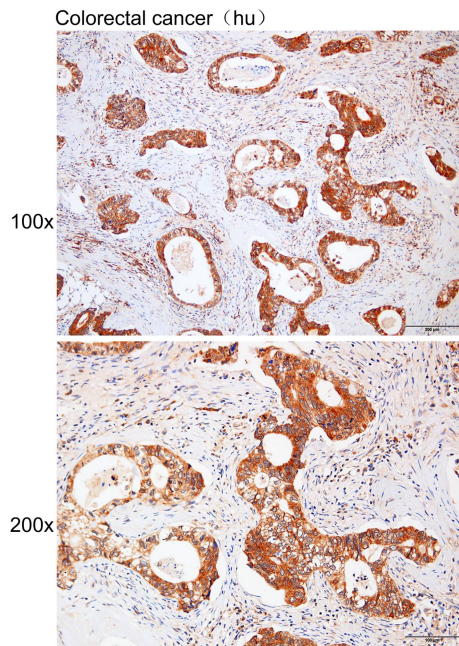
<b>【Product name】</b> : Anti-PHYKPL antibody	<b>【Source】</b> : Rabbit
<b>【Isotype】</b> : IgG	<b>【Species reactivity】</b> : Human Mouse Rat
<b>【Swiss Prot】</b> : Q8IUZ5	<b>【Gene ID】</b> : 85007
<b>【Calculated】</b> : MW:12/19/50kDa	
<b>【Purification】</b> : Affinity purification	
<b>【Tested applications】</b> : IHC	
<b>【Recommended dilution】</b> : IHC 1:50-200.	
<b>【IHC Positive sample】</b> : Human colorectal cancer	
<b>【Subcellular location】</b> : Cytoplasm	
<b>【Immunogen】</b> : Recombinant protein of human PHYKPL	
<b>【Storage】</b> : Shipped at 4°C. Upon delivery aliquot and store at -20°C	

### Background:

---

This is a nuclear gene encoding a mitochondrial enzyme that catalyzes the conversion of 5-phosphonoxy-L-lysine to ammonia, inorganic phosphate, and 2-aminoadipate semialdehyde. Mutations in this gene may cause phosphohydroxylysineuria. Alternative splicing results in multiple transcript variants.

## Verified picture



Immunohistochemistry of paraffin-embedded  
Human colorectal cancer with PHYKPL  
antibody diluted at 1:80