

## Anti-JPT1 Polyclonal Antibody

Cat: K109456P

### Summary:

---

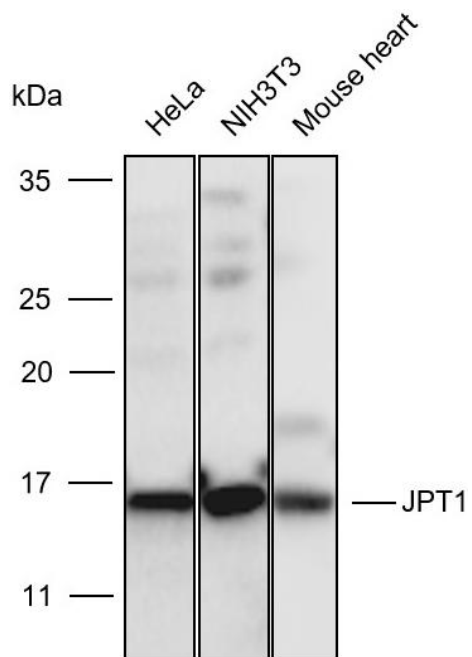
<b>【Product name】</b> : Anti-JPT1 antibody	<b>【Source】</b> : Rabbit
<b>【Isotype】</b> : IgG	<b>【Species reactivity】</b> : Human Mouse Rat
<b>【Swiss Prot】</b> : Q9UK76	<b>【Gene ID】</b> : 51155
<b>【Calculated】</b> : MW:11/16/20kDa	<b>【Observed】</b> : MW:16kDa
<b>【Purification】</b> : Affinity purification	
<b>【Tested applications】</b> : WB	
<b>【Recommended dilution】</b> : WB 1:500-2000.	
<b>【WB Positive sample】</b> : Hela,NIH3T3,Mouse heart	
<b>【Subcellular location】</b> : Nucleus Cell membrane	
<b>【Immunogen】</b> : A synthetic peptide of Human JPT1	
<b>【Storage】</b> : Shipped at 4°C. Upon delivery aliquot and store at -20°C	

### Background:

---

Modulates negatively AKT-mediated GSK3B signaling. Induces CTNNB1 'Ser-33' phosphorylation and degradation through the suppression of the inhibitory 'Ser-9' phosphorylation of GSK3B, which represses the function of the APC:CTNNB1:GSK3B complex and the interaction with CDH1/E-cadherin in adherent junctions. Plays a role in the regulation of cell cycle and cell adhesion. Has an inhibitory role on AR-signaling pathway through the induction of receptor proteosomal degradation.

## Verified picture



Western blot analysis with JPT1 antibody diluted at 1:2000; Lane: HeLa, NIH3T3, Mouse heart