

Anti-TALDO1 Polyclonal Antibody

Cat: K109460P

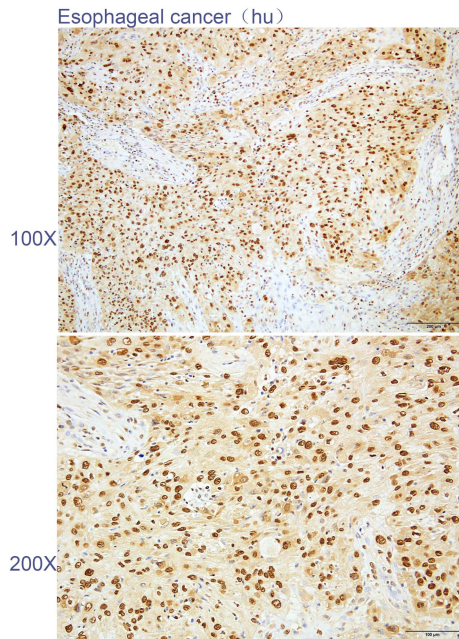
Summary:

【Product name】 : Anti-TALDO1 antibody	【Source】 : Rabbit
【Isotype】 : IgG	【Species reactivity】 : Human Mouse Rat
【Swiss Prot】 : P37837	【Gene ID】 : 6888
【Calculated】 : MW:38kDa	
【Purification】 : Affinity purification	
【Tested applications】 : IHC	
【Recommended dilution】 : IHC 1:100-300.	
【IHC Positive sample】 : Human esophageal cancer	
【Subcellular location】 : Nucleus Cytoplasm	
【Immunogen】 : Recombinant protein of human TALDO1	
【Storage】 : Shipped at 4°C. Upon delivery aliquot and store at -20°C	

Background:

Transaldolase 1 is a key enzyme of the nonoxidative pentose phosphate pathway providing ribose-5-phosphate for nucleic acid synthesis and NADPH for lipid biosynthesis. This pathway can also maintain glutathione at a reduced state and thus protect sulfhydryl groups and cellular integrity from oxygen radicals. The functional gene of transaldolase 1 is located on chromosome 11 and a pseudogene is identified on chromosome 1 but there are conflicting map locations. The second and third exon of this gene were developed by insertion of a retrotransposable element. This gene is thought to be involved in multiple sclerosis.

Verified picture



Immunohistochemistry of paraffin-embedded
Human esophageal cancer with TALDO1
antibody diluted at 1:200