

Anti-SATB2 Polyclonal Antibody

Cat: K109461P

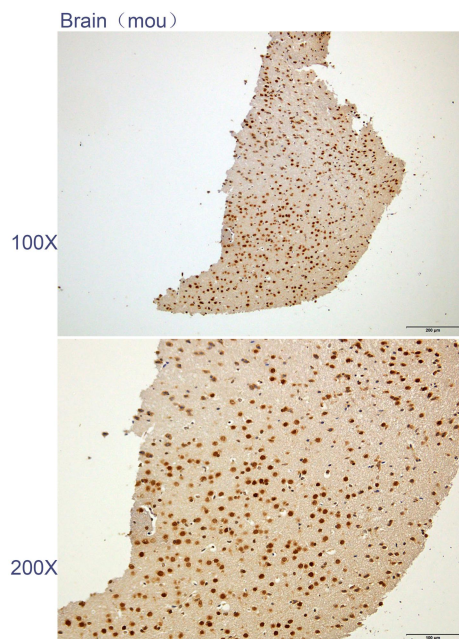
Summary:

【Product name】 : Anti-SATB2 antibody	【Source】 : Rabbit
【Isotype】 : IgG	【Species reactivity】 : Human Mouse Rat
【Swiss Prot】 : Q9UPW6	【Gene ID】 : 23314
【Calculated】 : MW:69/83kDa	
【Purification】 : Affinity purification	
【Tested applications】 : IHC	
【Recommended dilution】 : IHC 1:100-300.	
【IHC Positive sample】 : Mouse brain	
【Subcellular location】 : Nucleus	
【Immunogen】 : Recombinant protein of human SATB2	
【Storage】 : Shipped at 4°C. Upon delivery aliquot and store at -20°C	

Background:

This gene encodes a DNA binding protein that specifically binds nuclear matrix attachment regions. The encoded protein is involved in transcription regulation and chromatin remodeling. Defects in this gene are associated with isolated cleft palate and cognitive disability. Alternate splicing results in multiple transcript variants that encode the same protein.

Verified picture



Immunohistochemistry of paraffin-embedded
Mouse brain with SATB2 antibody diluted at
1:200