

Anti-KLHDC3 Polyclonal Antibody

Cat: K109462P

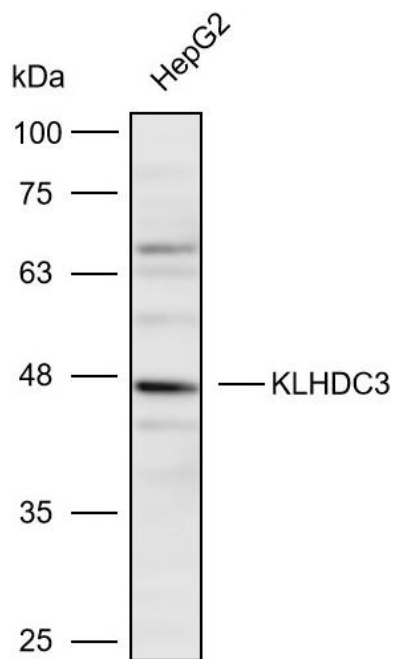
Summary:

【Product name】 : Anti-KLHDC3 antibody	【Source】 : Rabbit
【Isotype】 : IgG	【Species reactivity】 : Human Mouse Rat
【Swiss Prot】 : Q9BQ90	【Gene ID】 : 116138
【Calculated】 : MW:43kDa	【Observed】 : MW:46kDa
【Purification】 : Affinity purification	
【Tested applications】 : WB	
【Recommended dilution】 : WB 1:1000-3000.	
【WB Positive sample】 : HepG2	
【Subcellular location】 : Nucleus	
【Immunogen】 : Recombinant protein of human KLHDC3	
【Storage】 : Shipped at 4°C. Upon delivery aliquot and store at -20°C	

Background:

The protein encoded by this gene contains six repeated kelch motifs that are structurally similar to recombination activating gene 2, a protein involved in the activation of the V(D)J recombination. In mouse, this gene is found to be expressed specifically in testis. Its expression in pachytene spermatocytes is localized to cytoplasm and meiotic chromatin, suggesting that this gene may be involved in meiotic recombination.

Verified picture



Western blot analysis with KLHDC3
antibody diluted at 1:2000; Lane: HepG2