

## Anti-ERGIC3 Polyclonal Antibody

Cat: K109465P

### Summary:

---

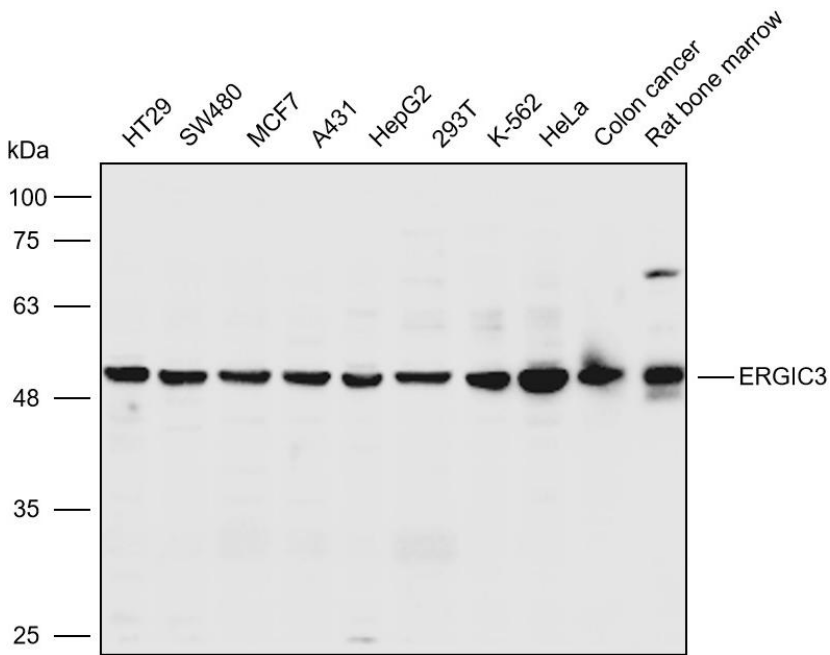
- 【Product name】** : Anti-ERGIC3 antibody                      **【Source】** : Rabbit
- 【Isotype】** : IgG    **【Species reactivity】** : Human Mouse Rat
- 【Swiss Prot】** : Q9Y282    **【Gene ID】** : 51614
- 【Calculated】** : MW:26/43/44kDa                                      **【Observed】** : MW:52kDa
- 【Purification】** : Octanoic acid-ammonium sulfate precipitation
- 【Tested applications】** : WB IHC
- 【Recommended dilution】** : WB 1:1000-3000. IHC 1:100-300.
- 【WB Positive sample】** : HT29,SW480,MCF7,A431,HepG2,293T,K-562,Hela,Human colon cancer,Rat bone marrow
- 【IHC Positive sample】** : Human breast cancer
- 【Subcellular location】** : Cytoplasm
- 【Immunogen】** : Recombinant protein of human ERGIC3
- 【Storage】** : Shipped at 4°C. Upon delivery aliquot and store at -20°C

### Background:

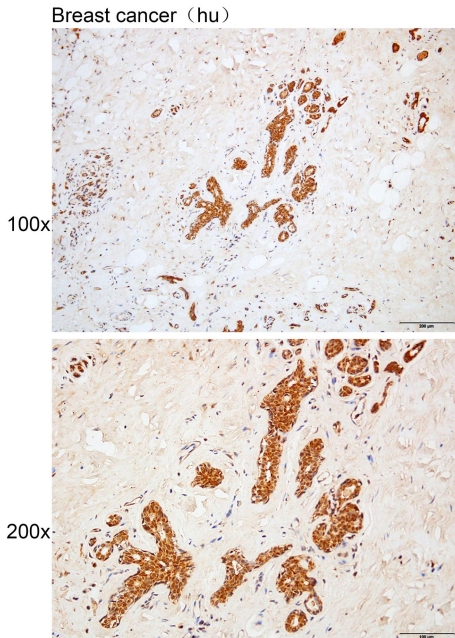
---

Possible role in transport between endoplasmic reticulum and Golgi.

## Verified picture



Western blot analysis with ERGIC3 antibody diluted at 1:2000; Lane: HT29,SW480,MCF7,A431,HepG2,293T,K-562,HeLa,Human colon cancer,Rat bone marrow



Immunohistochemistry of paraffin-embedded Human breast cancer with ERGIC3 antibody diluted at 1:200