

Anti-SUMO3 Polyclonal Antibody

Cat: K109468P

Summary:

【Product name】 : Anti-SUMO3 antibody

【Source】 : Rabbit

【Isotype】 : IgG

【Species reactivity】 : Human Mouse Rat

【Swiss Prot】 : P55854

【Gene ID】 : 6612

【Calculated】 : MW:12/16kDa

【Observed】 : MW:17kDa

【Purification】 : Affinity purification

【Tested applications】 : WB

【Recommended dilution】 : WB 1:1000-3000.

【WB Positive sample】 : MCF7,SW480,Hela,A431,,K-562,Mouse testis,Mouse kidney,Rat brain,Rat kidney

【Subcellular location】 : Nucleus Cytoplasm

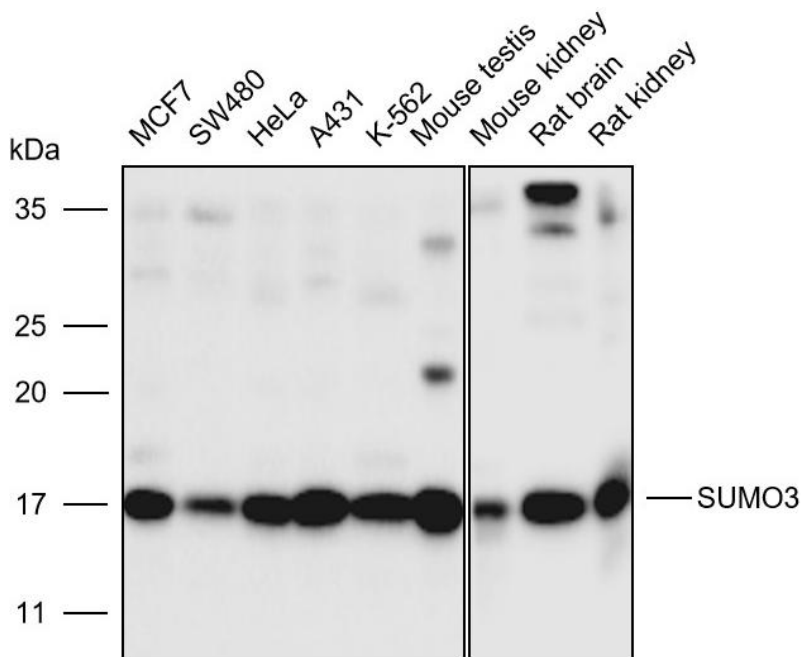
【Immunogen】 : Recombinant protein of human SUMO3

【Storage】 : Shipped at 4°C. Upon delivery aliquot and store at -20°C

Background:

This gene encodes a member of the small ubiquitin-related modifier (SUMO) family of eukaryotic proteins. The encoded protein is covalently conjugated to other proteins via a post-translation modification known as sumoylation. Sumoylation may play a role in a wide variety of cellular processes, including nuclear transport, DNA replication and repair, mitosis, transcriptional regulation, and signal transduction. Alternatively spliced transcript variants encoding distinct proteins have been described.

Verified picture



Western blot analysis with SUMO3 antibody diluted at 1:2000; Lane: MCF7, SW480, HeLa, A431, K-562, Mouse testis, Mouse kidney, Rat brain, Rat kidney