

Anti-CALM2 Polyclonal Antibody

Cat: K109469P

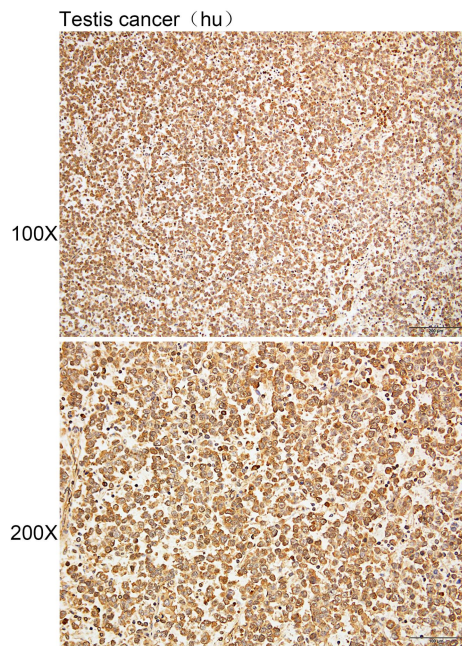
Summary:

【Product name】 : Anti-CALM2 antibody	【Source】 : Rabbit
【Isotype】 : IgG	【Species reactivity】 : Human Mouse Rat
【Swiss Prot】 : P62158	【Gene ID】 : 805
【Calculated】 : MW:17kDa	
【Purification】 : Affinity purification	
【Tested applications】 : IHC	
【Recommended dilution】 : IHC 1:50-200.	
【IHC Positive sample】 : Human testis cancer	
【Subcellular location】 : Cytoplasm	
【Immunogen】 : Recombinant protein of human CALM2	
【Storage】 : Shipped at 4°C. Upon delivery aliquot and store at -20°C	

Background:

This gene is a member of the calmodulin gene family. There are three distinct calmodulin genes dispersed throughout the genome that encode the identical protein, but differ at the nucleotide level. Calmodulin is a calcium binding protein that plays a role in signaling pathways, cell cycle progression and proliferation. Several infants with severe forms of long-QT syndrome (LQTS) who displayed life-threatening ventricular arrhythmias together with delayed neurodevelopment and epilepsy were found to have mutations in either this gene or another member of the calmodulin gene family (PMID:23388215). Mutations in this gene have also been identified in patients with less severe forms of LQTS (PMID:24917665), while mutations in another calmodulin gene family member have been associated with catecholaminergic polymorphic ventricular tachycardia (CPVT)(PMID:23040497), a rare disorder thought to be the cause of a significant fraction of sudden cardiac deaths in young individuals. Pseudogenes of this gene are found on chromosomes 10, 13, and 17. Alternative splicing results in multiple transcript variants encoding different isoforms.

Verified picture



Immunohistochemistry of paraffin-embedded
Human testis cancer with CALM2 antibody
diluted at 1:80