

Anti-ETHE1 Polyclonal Antibody

Cat: K109474P

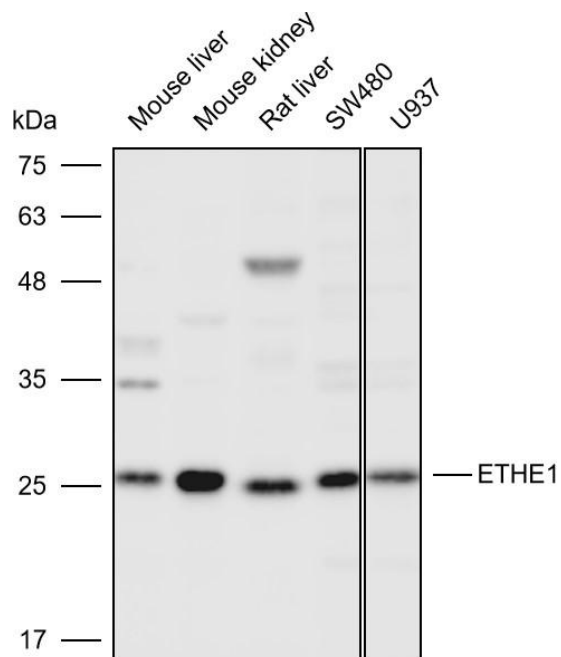
Summary:

【Product name】 : Anti-ETHE1 antibody	【Source】 : Rabbit
【Isotype】 : IgG	【Species reactivity】 : Human Mouse Rat
【Swiss Prot】 : O95571	【Gene ID】 : 23474
【Calculated】 : MW:28kDa	【Observed】 : MW:26kDa
【Purification】 : Affinity purification	
【Tested applications】 : WB IHC	
【Recommended dilution】 : WB 1:1000-3000. IHC 1:50-200.	
【WB Positive sample】 : Mouse liver,Mouse kidney,Rat liver,SW480,U937	
【IHC Positive sample】 : Human melanoma	
【Subcellular location】 : Cytoplasm	
【Immunogen】 : Recombinant protein of human ETHE1	
【Storage】 : Shipped at 4°C. Upon delivery aliquot and store at -20°C	

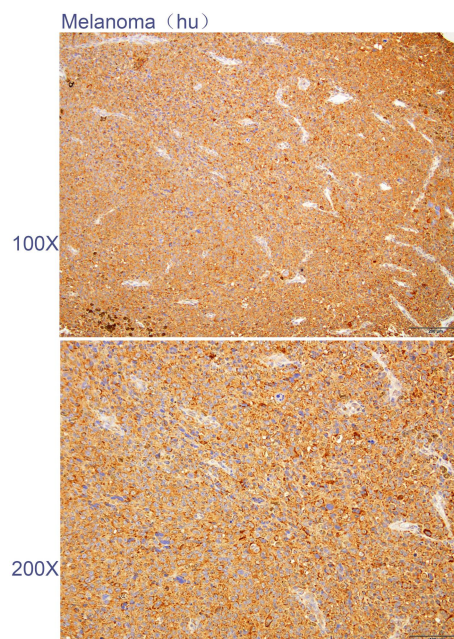
Background:

This gene encodes a member of the metallo beta-lactamase family of iron-containing proteins involved in the mitochondrial sulfide oxidation pathway. The encoded protein catalyzes the oxidation of a persulfide substrate to sulfite. Certain mutations in this gene cause ethylmalonic encephalopathy, an infantile metabolic disorder affecting the brain, gastrointestinal tract and peripheral vessels. Alternative splicing results in multiple transcript variants encoding different isoforms.

Verified picture



Western blot analysis with ETHE1 antibody diluted at 1:2000; Lane: Mouse liver, Mouse kidney, Rat liver, SW480, U937



Immunohistochemistry of paraffin-embedded Human melanoma with ETHE1 antibody diluted at 1:100