

## Anti-CHID1 Polyclonal Antibody

Cat: K109528P

### Summary:

---

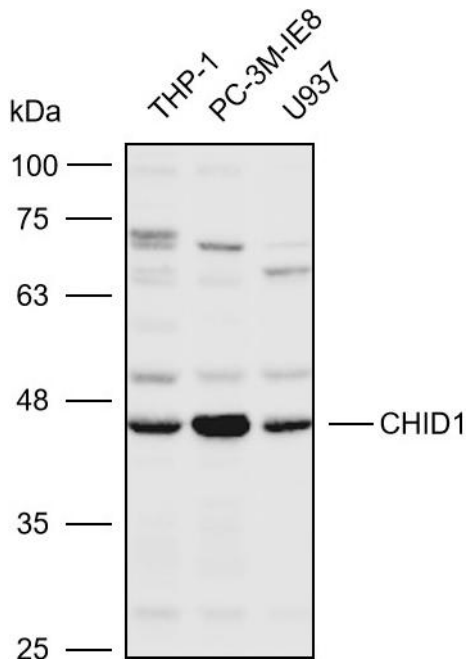
<b>【Product name】</b> : Anti-CHID1 antibody	<b>【Source】</b> : Rabbit
<b>【Isotype】</b> : IgG	<b>【Species reactivity】</b> : Human Mouse Rat
<b>【Swiss Prot】</b> : Q9BWS9	<b>【Gene ID】</b> : 66005
<b>【Calculated】</b> : MW:42/45/48kDa	<b>【Observed】</b> : MW:45kDa
<b>【Purification】</b> : Affinity purification	
<b>【Tested applications】</b> : WB IHC	
<b>【Recommended dilution】</b> : WB 1:1000-3000. IHC 1:50-200.	
<b>【WB Positive sample】</b> : THP-1,PC-3M-IE8,U937	
<b>【IHC Positive sample】</b> : Human colorectal cancer	
<b>【Subcellular location】</b> : Cytoplasm	
<b>【Immunogen】</b> : Recombinant protein of human CHID1	
<b>【Storage】</b> : Shipped at 4°C. Upon delivery aliquot and store at -20°C	

### Background:

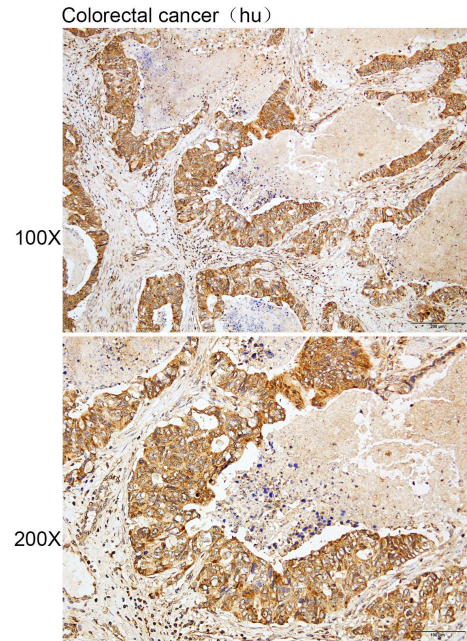
---

Saccharide- and LPS-binding protein with possible roles in pathogen sensing and endotoxin neutralization. Ligand-binding specificity relates to the length of the oligosaccharides, with preference for chitotetraose (in vitro).

## Verified picture



Western blot analysis with CHID1 antibody diluted at 1:2000; Lane: THP-1, PC-3M-IE8, U937



Immunohistochemistry of paraffin-embedded Human colorectal cancer with CHID1 antibody diluted at 1:100