

Anti-UBE2B Polyclonal Antibody

Cat: K109529P

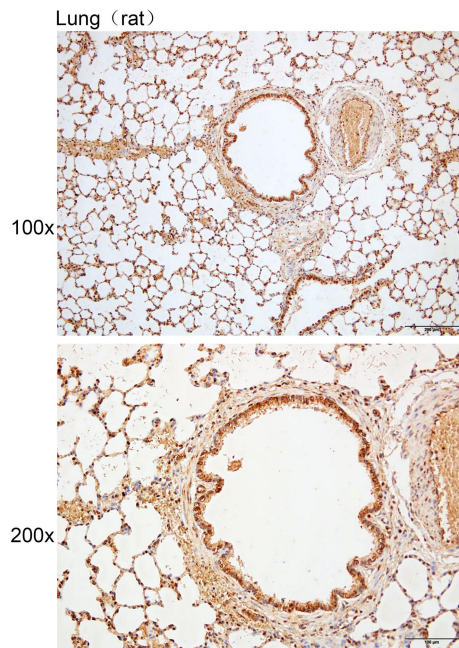
Summary:

- 【Product name】** : Anti-UBE2B antibody **【Source】** : Rabbit
- 【Isotype】** : IgG **【Species reactivity】** : Human Mouse Rat
- 【Swiss Prot】** : P63146 **【Gene ID】** : 7320
- 【Calculated】** : MW:17kDa
- 【Purification】** : Octanoic acid-ammonium sulfate precipitation
- 【Tested applications】** : IHC
- 【Recommended dilution】** : IHC 1:100-300.
- 【IHC Positive sample】** : Rat lung
- 【Subcellular location】** : Cell membrane Nucleus
- 【Immunogen】** : Recombinant protein of human UBE2B
- 【Storage】** : Shipped at 4°C. Upon delivery aliquot and store at -20°C

Background:

The modification of proteins with ubiquitin is an important cellular mechanism for targeting abnormal or short-lived proteins for degradation. Ubiquitination involves at least three classes of enzymes: ubiquitin-activating enzymes, or E1s, ubiquitin-conjugating enzymes, or E2s, and ubiquitin-protein ligases, or E3s. This gene encodes a member of the E2 ubiquitin-conjugating enzyme family. This enzyme is required for post-replicative DNA damage repair. Its protein sequence is 100% identical to the mouse, rat, and rabbit homologs, which indicates that this enzyme is highly conserved in eukaryotic evolution.

Verified picture



Immunohistochemistry of paraffin-embedded
Rat lung with UBE2B antibody diluted at 1:200