

Anti-EEF1A1 Polyclonal Antibody

Cat: K109530P

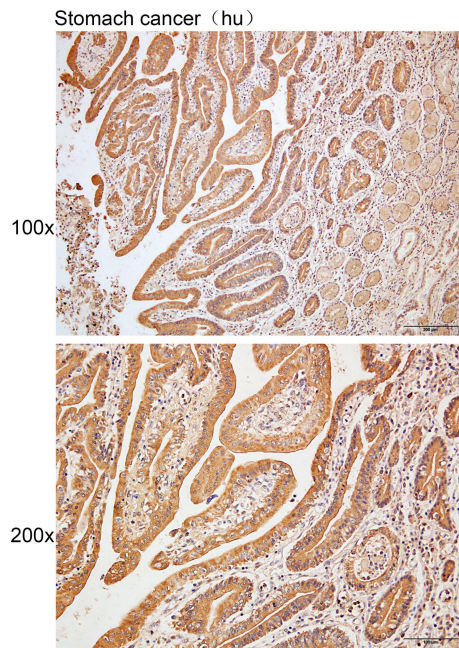
Summary:

【Product name】 : Anti-EEF1A1 antibody	【Source】 : Rabbit
【Isotype】 : IgG	【Species reactivity】 : Human Mouse Rat
【Swiss Prot】 : P68104	【Gene ID】 : 1915
【Calculated】 : MW:48/50kDa	
【Purification】 : Octanoic acid-ammonium sulfate precipitation	
【Tested applications】 : IHC	
【Recommended dilution】 : IHC 1:50-200.	
【IHC Positive sample】 : Human stomach cancer	
【Subcellular location】 : Cytoplasm	
【Immunogen】 : Recombinant protein of human EEF1A1	
【Storage】 : Shipped at 4°C. Upon delivery aliquot and store at -20°C	

Background:

This gene encodes an isoform of the alpha subunit of the elongation factor-1 complex, which is responsible for the enzymatic delivery of aminoacyl tRNAs to the ribosome. This isoform (alpha 1) is expressed in brain, placenta, lung, liver, kidney, and pancreas, and the other isoform (alpha 2) is expressed in brain, heart and skeletal muscle. This isoform is identified as an autoantigen in 66% of patients with Felty syndrome. This gene has been found to have multiple copies on many chromosomes, some of which, if not all, represent different pseudogenes.

Verified picture



Immunohistochemistry of paraffin-embedded
Human stomach cancer with EEF1A1 antibody
diluted at 1:80