

# Anti-RASGEF1A Polyclonal Antibody

Cat: K109531P

## Summary:

---

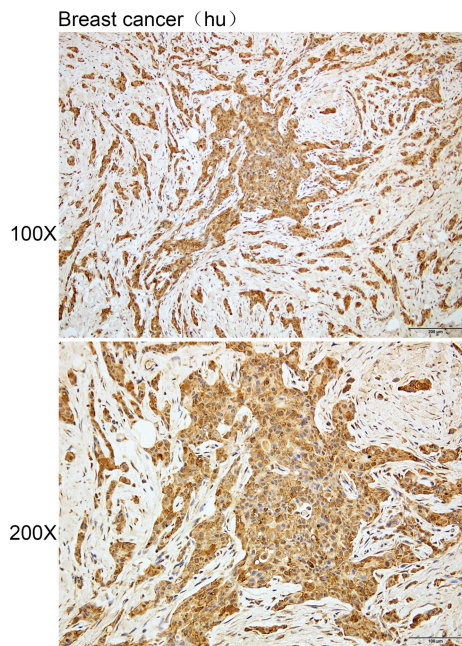
<b>【Product name】</b> : Anti-RASGEF1A antibody	<b>【Source】</b> : Rabbit
<b>【Isotype】</b> : IgG	<b>【Species reactivity】</b> : Human Mouse Rat
<b>【Swiss Prot】</b> : Q8N9B8	<b>【Gene ID】</b> : 221002
<b>【Calculated】</b> : MW:55/56kDa	
<b>【Purification】</b> : Affinity purification	
<b>【Tested applications】</b> : IHC	
<b>【Recommended dilution】</b> : IHC 1:50-200.	
<b>【IHC Positive sample】</b> : Human breast cancer	
<b>【Subcellular location】</b> : Cytoplasm	
<b>【Immunogen】</b> : Recombinant protein of human RASGEF1A	
<b>【Storage】</b> : Shipped at 4°C. Upon delivery aliquot and store at -20°C	

## Background:

---

Guanine nucleotide exchange factor (GEF) with specificity for RAP2A, KRAS, HRAS, and NRAS (in vitro). Plays a role in cell migration.

## Verified picture



Immunohistochemistry of paraffin-embedded  
Human breast cancer with RASGEF1A  
antibody diluted at 1:80