

Low molecular weight protein Marker (14.4kD-97.4kD)

Item No. : PR1400

Specification: 20T

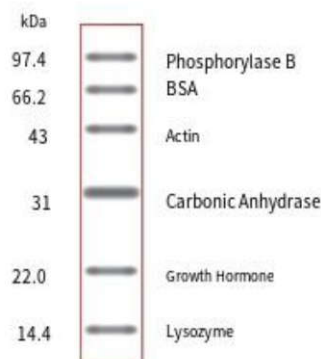
Storage: -20°C can be stored for at least one year. Avoid repeated freezing and thawing, it is recommended to store in separate packages.

Product Description:

This product is a freeze-dried powder containing 6 protein mixtures, the molecular weight range is 14.4kD-97.4kD, the content of each protein is about 20-30μg. After SDS-PAGE (polyacrylamide gel) electrophoresis, 6 bands with uniform distribution and similar density can be obtained by staining with Coomassie bright blue. It can be used to determine the molecular weight of the protein after SDS-PAGE electrophoresis.

Instructions for use (for reference only) :

1. After opening, dissolve in 400μL volume of 1× protein sample buffer (containing sulfhydryl reducing agent), heat in boiling water bath for 5 minutes, after cooling, it can be divided according to needs in a small amount, each tube 20μL, stored at -20°C, take one tube each time for use.
2. If it is used after long-term storage, it is best to preheat the small tube after subpacking in the boiling water bath for 3-5 minutes before use, and then apply the sample electrophoresis. 6 protein bands can be seen after dyeing with Coomassie bright blue G-250 (see the diagram below).



Precautions:

1. It is recommended that the concentration of separation glue is 12%, the concentration of concentrated glue is 5%, and the separation glue is prepared first when making glue, and then the concentrated glue is prepared after polymerization. When electrophoresis, 80v voltage run for about 1 hour, when the indicator reaches the upper edge of the separation glue, the voltage is adjusted to 120v until the end of electrophoresis. The entire electrophoretic process should take about 3-4 hours.
2. After electrophoresis, the glue can be dyed and observed. If the dyeing effect is not good when using the formula or considering its toxicity, please choose our company's fast dyeing solution of Coomas bright blue protein glue. This product has the characteristics of fast dyeing, non-toxic and high sensitivity, and is a substitute for conventional dyeing solution.

Related products:

- P1015* *4× Protein Loading buffer (DTT included)*
- P1016* *4× Protein loading buffer (containing sulphydryl reducing agent)*
- T1070* *5× TRIS-Glycine electrophoresis buffer*
- P1300-1* *SDS-PAGE gel preparation kit*
- P1300-500* *Coomassie Bright Blue Quick Dyeing Solution*