

Instructions for prestaining low molecular weight protein Marker (14.4kD-97.4kD)

Item No. : PR1600

Store: -20°C, valid for 1 year. Avoid repeated freezing and thawing, it is recommended to freeze in separate packages.

Specification: 100T (1mL)

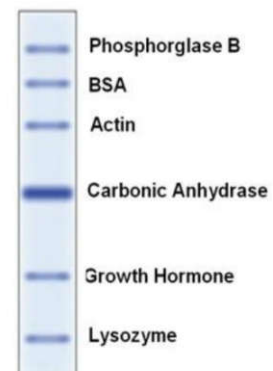
Product Description:

This product contains 6 kinds of pre-dyed standard proteins with known molecular weight, the original molecular weight range is 14.4kD-97.4kD, the molecular weight will change slightly after pre-dyeing. It can be used to directly observe the electrophoretic state of proteins and clearly judge the membrane transfer effect of Western Blot. After SDS-PAGE gel electrophoresis and transfer to PVDF or NC membrane, 6 clear blue protein bands can be obtained.

Instructions for use:

1. After opening, according to the need for a small amount of sub-packaging, each tube 10 μ L, storage, take one tube each time for use.-20°C
2. If it is used after long-term storage, it is best to preheat the small tube after subassembly in boiling water bath for 3-5 minutes before use and then sample electrophoresis.
3. It is recommended that the concentration of separation glue is 12%.

成分	原分子量 (kDa)	预染后分子量 (kDa)
兔磷酸化酶 B	97.4	99.0
牛血清白蛋白	66.2	70.0
兔肌动蛋白	43.0	43.0
牛碳酸酐	31.0	31.0
人生长激素	22.0	24.0
鸡蛋清溶菌酶	14.4	15.0



Note:

95 ° C heating of protein Marker is required, otherwise some protein will be deposited on the upper edge of the separation glue after electrophoresis, and a protein impurity zone will appear.

Related products:

P1015 4× Protein Loading buffer (DTT included)

T1070 5× TRIS-Glycine electrophoresis buffer

D1060 10× electrophoretic transfer buffer

P0012 10× ponceau stain solution

P1200 SDS-PAGE Gel preparation kit

PR1700 prestain with secondary high molecular weight protein MARKER