

Instructions for Rainbow 130 Broad spectrum Protein marker

Item number: PR1950

Specification: 20T (100 μ L)/50T(250 μ L) /100T(250 μ Lx 2) /500T(250 μ Lx 10)

Storage: Store at -20 °C for at least 2 years.

Product Features:

- Three color pre-dyeing, bright color, neat strip, easy to observe.
- Use less, save cost, only 5 μ L can be perfect (1.5 mm, 10 hole comb).
- Wide spectrum multi-band, one can meet a variety of experimental needs.

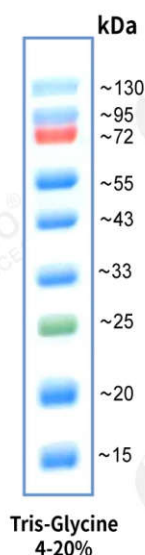
Product Introduction:

This product contains 9 kinds of color pre-dyed known molecular weight standard proteins, molecular weight range of 15 Kd-130 kD, each protein content is about 0.2-0.4 mg/mL. Predyed marker can be used to directly observe the electrophoretic status of proteins and clearly judge the transfer effect of Western Blot. After SDS-PAGE gel electrophoresis or transfer to PVDF or NC membrane, 9 clear color protein bands were obtained, of which 72 kD bands were red, 25 kD bands were green, and the rest were blue.

Instructions for use (for reference only) :

1. This product is a ready-to-use liquid, which can be used for direct sample electrophoresis. There is no need to heat, dilute or add reducing agents before sample loading.
2. After 5 μ L sample loading, clear rainbow bands can be seen after SDS-PAGE electrophoresis process and film transfer.
3. It is recommended that the concentration of separation glue is 15%.

Electrophoretic schematic description:



Precautions:

1. This product contains a high concentration of glycerin, conventional -20°C stored as a liquid state, can be used directly. If the temperature of the refrigerator is unstable, resulting in ice, it

can be properly subpackaged and stored at 4°C for at least 6 months.

2. The separation effect of Marker is related to the concentration of PAGE glue. If the concentration of separation glue is lower than 15%, the strips below 25kD are not easy to separate, but the green (25KD) and above strips are not affected. If the target strip is less than 25KD, it is recommended that the concentration of separation glue be greater than or equal to 15%.
3. The transfer effect is related to the transfer time, and needs to be determined according to the size of the customer's target strip. If some of the larger molecular weight strips are not successfully transferred after the transfer, it is normal.

Related products:

<i>P1015</i>	<i>4× Protein Loading buffer (DTT included)</i>
<i>P1200</i>	<i>SDS-PAGE gel preparation kit</i>
<i>T1070</i>	<i>5× TRIS-Glycine electrophoretic buffer</i>
<i>D1060</i>	<i>10 × electrophoretic transfer buffer</i>
<i>PR1920</i>	<i>Rainbow 245 Broad Spectrum Protein marker</i>
<i>PR1700</i>	<i>prestain Second high molecular weight Protein marker</i>
<i>SW3010</i>	<i>Membrane sealer</i>
<i>DA1010</i>	<i>DAB Color Developing Kit (20×)</i>
<i>PE0010</i>	<i>ECL Plus Fluorescence Detection Reagent (ECL Hypersensitive Luminescent Liquid)</i>